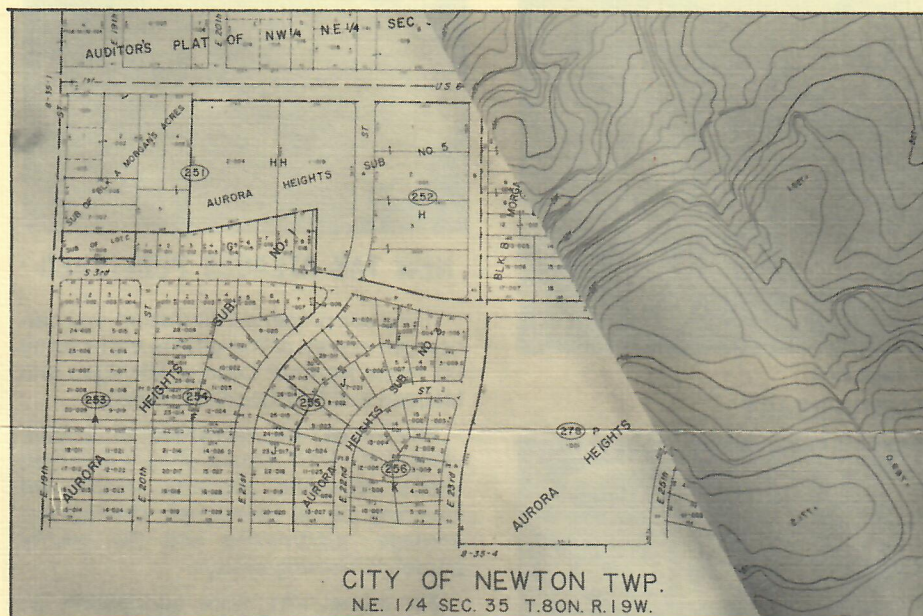




map news



Tax map shows property lines, dimensions and permanent parcel numbers. Overlay shows topographic contour information for engineering uses.

CITY OF NEWTON USES UNIFIED MAPPING

The City of Newton, Iowa, has recently begun to use a completely new base mapping program that provides the information for city assessment and engineering projects.

A common problem in many cities and counties is not having reliable map information. The situation is usually compounded by the fact that each office has different requirements for map information. This leads to mapping duplication between departments and higher costs.

Mapping costs reduced using common base map

Officials in the City of Newton realized they could reduce mapping cost by combining resources to prepare a common base map. After meeting with Sidwell representatives, they decided to have a Unified Mapping program prepared for the entire city.

The first step was to obtain precision aerial photography to be used as the mapping base. Because several types of final maps were prepared, the photography was taken at two scales. Sidwell's 12 inch focal length camera was used to obtain the photo base photography and a 3½ inch focal length camera for the topographic mapping photos.

33" x 33" map contains quarter section

The assessor's and engineer's offices decided that a common sheet size of 33" x 33" containing a quarter section would best suit their needs.

Then detailed orthographic aerial film positives were prepared at a scale of 1" = 100'. Tax records from the assessor's

office and the county auditor's and recorder's office were used to accurately draw each of the approximately 6,000 parcels of property within the city's corporate limits.

Maps show permanent parcel numbers

In addition to property lines, dimensions and subdivision information, the tax maps contain a new permanent parcel numbering system conforming to Iowa statutes. The numbering system is the same as that used on nineteen other Iowa mapping projects prepared by Sidwell.

The new aerial film positives were also used as a base for new topographic maps for the engineer's office.

Topographic information on transparent overlay

Maps at 1" = 100' showing two foot contour intervals, were prepared for a 14½ square mile area. Sidwell's Topo Plan System, which produces a map containing contours and limited planimetric detail superimposed on an orthographic aerial base, was used. Now city departments have a common base mapping system that contains detailed engineering and assessment information together with photos showing complete ground features.

Copies of maps can be made for other uses.

All maps prepared as part of this project were delivered on reproducible, mylar material. This allows inexpensive paper prints to be made for planning and field use. Copies can also be made for city and county residents, thereby insuring the widest possible use of the new map information.



Airplane used for aerial photography

SPRING PHOTOGRAPHY SEASON TO START

It may look like winter outside, but March is typically the start of the Spring aerial photography season.

As soon as the snow melts, one of the two short photography seasons of the year will begin.

Clear, cloud-free days are needed

Weather conditions are crucial for taking acceptable aerial photography. Only clear, cloud-free days without turbulent winds are acceptable. The sun angle must also be carefully checked to prevent excessively long shadows from appearing on the photos.

Plan projects well in advance

With the problems that can be caused by weather conditions, it's good advice to plan any aerial project well in advance. This allows time for preparing flight maps and getting clearances if required. The aerial photography can then be taken as soon as weather conditions permit.

If you're considering new aerial photography for a project this year, the best advice is, don't wait too long. Our photo experts are available to answer any questions you may have and to help you plan your project as economically as possible.

SIDWELL TO ATTEND STATE AND REGIONAL MEETINGS

Sidwell's aerial photography and mapping services will be represented at the following state and regional meetings in the coming months:

- Illinois County Officials Conference
- Iowa County Officials Conference
- North Central Regional Association of Assessing Officers Conference, to be held in the state of Michigan.



Present office building in Sidwell Park

SIDWELL MARKS 55th ANNIVERSARY

"This year is the 55th anniversary of The Sidwell Company. Over the years, we have seen many changes in the mapping industry. I'm happy to say that many of these, particularly in the areas of tax mapping, topo plan and permanent parcel numbering systems, were initiated by Sidwell.

The need for accurate map information is greater today than it has ever been. Through the use of state-of-the-art interactive computer graphics technology, Sidwell offers a new and expanded range of services to help our clients meet that challenge."

W. H. Barg, Executive Vice President

Looking back, 1927 was not the best time to start a new business. Within two years, the stock market would crash making it difficult for even established businesses to survive. But in 1927, these problems were still over the horizon and Sidwell Studios was formed.

First office in founder's home

Joe H. Sidwell, the Company founder, started in the mapping business by taking over part of the ailing W. W. Hixon Company. From his home in Lombard, Illinois, he and his wife maintained and expanded the business of providing legal descriptive atlases covering various Midwest counties.

As the business prospered, larger facilities were needed. Offices were established in a Lombard office building and during World War II, in the Green Valley Schools. In 1949, a move was made to the two-story brick Chicago, Aurora and Elgin electric railroad substation in West Chicago, Illinois.



1949 offices CA&E railroad substation

Sidwell Park created in 1960

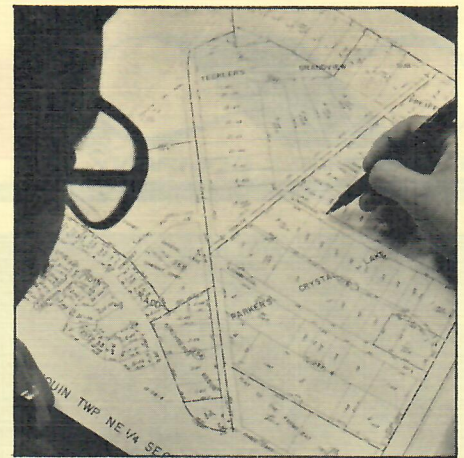
In 1960, a permanent home was found when Sidwell Park was created with a modern building, acres of park-like grounds and two lakes.

Since then, there have been two major additions to the original building and the name has been changed to, The Sidwell Company.

Sidwell's mapping services have expanded through the years to satisfy the needs of our clients. However, our early ties to legal descriptive mapping are evident in our aerial based tax mapping and permanent parcel numbering services. Topographic and related engineering mapping are also important services offered.

Computer graphic services in the future

The future will be challenging. Interactive computer graphics services will provide Sidwell clients with unique tools to store, retrieve and manage map and attribute information.



NEW TAX ATLASES PUBLISHED

If you use property information, you can now get copies of the official 1981 county tax maps for Kent County, Michigan and McLean and Will Counties, Illinois.

The maps are contained in a convenient 11" x 17" bound atlas. Each map shows complete property information including parcel boundaries, dimensions, acreage, subdivisions and the county parcel numbering system.

For prices and more information on these and other county atlases, contact Mr. Derrel Owens at 312/231-0206.

SIDWELL PHOTOS TO HELP GOLFERS

If International Chroma Graphics, Inc. of Bloomington, Illinois has its way, golfers may soon get a better look at each hole before they hit their tee shot.

Aerial photographs show ground conditions

The change relies on replacing standard hole diagrams with an enlarged color aerial photograph showing the actual ground conditions from tee to green.

To test the idea, Sidwell obtained clear aerial photography of a suburban Chicago golf course and prepared enlargements for several holes.

Yardage marks show distances

The enlargements were annotated by International Chroma Graphics with yardage marks to show the distance off the tee and the yardage remaining to the green. They then were mounted under specially treated plexiglass and incorporated into an attractive information sign.

Although still in the experimental stage, company officials report the idea has generated a lot of interest among golf course owners.



THE SIDWELL COMPANY

FOR FURTHER INFORMATION ON ANY SIDWELL MAPPING SERVICES . . .

Write to The Sidwell Company, 28W240 North Avenue, West Chicago, IL 60185 or phone (312) 231-0206